


30  **FVPSA**
years

A close-up photograph of two hands, one larger and one smaller, clasped together in a supportive grip. The hands are positioned vertically, with the larger hand at the top and the smaller hand at the bottom. The background is dark, making the skin tones stand out. The overall mood is one of strength and support.

FVPSA

provides

life-saving

safety,

services,

support.

@NNEDV

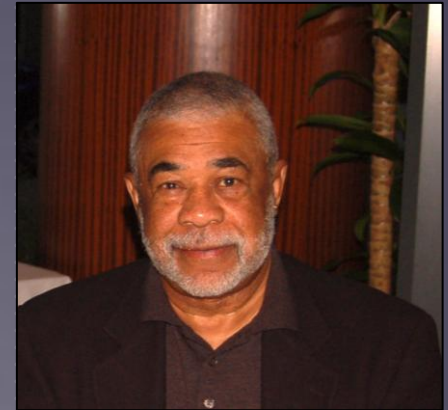
#VetoViolence

REFLECTIONS ON FVPSA'S BEGINNING AND EVOLUTION

Lynn Rosenthal, White House Advisor
on Violence Against Women Issues

In discussion with -

- ▶ Bill Riley, former FVPSA Program Director
- ▶ Marylouise Kelley, FVPSA Program Director



**DOMESTIC VIOLENCE
DIDN'T ALWAYS
HAVE A NAME.**



FAMILY VIOLENCE PREVENTION & SERVICES ACT

1984

IMPORTANT FACTS ABOUT FVPSA

The bottom of the slide features a decorative graphic consisting of a solid purple horizontal bar. Below this bar, a white line forms a wide, shallow inverted triangle, creating a white space that tapers towards the center. The background of the entire slide is a dark purple with a fine, light-colored dot grid pattern.

FVPSA PROGRAM FOCUS AREAS

- Improving the social and emotional wellbeing of domestic violence survivors and their children
- Increasing awareness and value of culturally specific and trauma informed programming/practices
- Building evidence base for domestic violence services
- Expanding trauma-informed practices and programming
- Strengthening partnerships between states, tribes, territories, and coalitions

FVPSA FORMULA GRANTS OVERVIEW

- ▶ **State & Territory grants 70%**
 - ▶ Awards are based on population formula and managed by FVPSA State Administrators
- ▶ **Tribal grants 10%**
 - ▶ Awards to tribes and tribal organizations based on annual applications to receive funding
- ▶ **Coalition grants 10%**
 - ▶ Awards to the designated, state and territory, domestic violence

FVPSA FUNDS LIFE-SAVING SHELTER & SERVICES

In 2012, **1.3 million adults, youth and children** received critical services – including safe housing, crisis response, advocacy, legal assistance, counseling, safety planning and support groups – from community-based programs funded by FVPSA



876,506
women



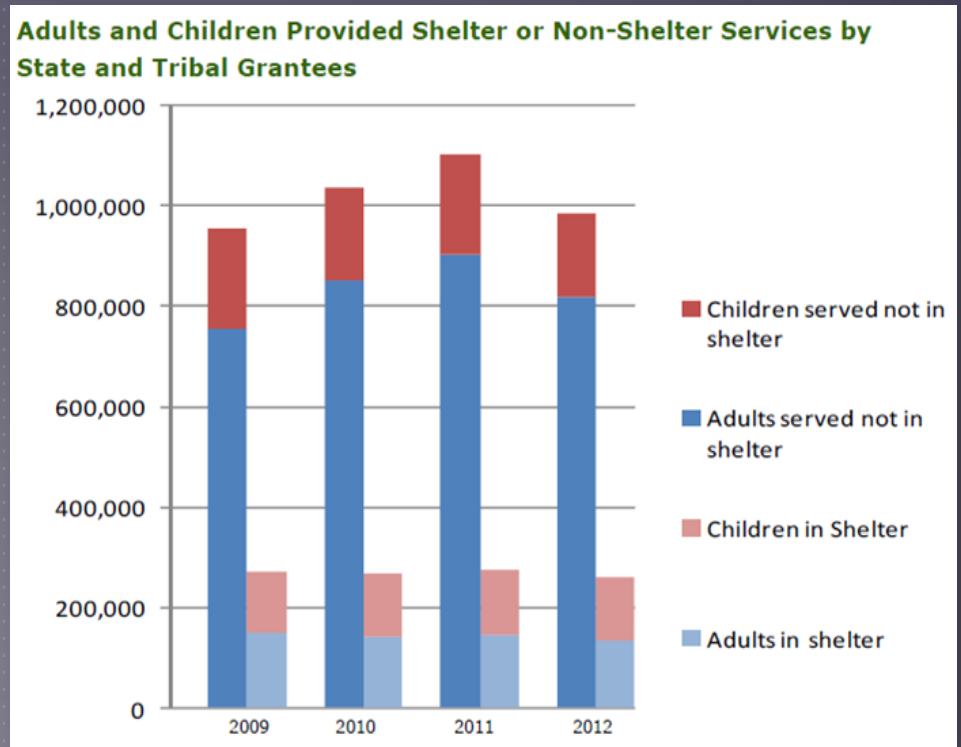
76,813 men



292,799
children

IMPACT OF FVPSA SERVICES

90% of survivors seen by local domestic violence programs report increased confidence in how to plan for their safety after receiving supportive services.



NATIONAL DOMESTIC VIOLENCE HOTLINE

free · confidential · 24/7

The National Domestic Violence
HOTLINE
 1.800.799.SAFE (7233) · 1.800.787.3224 (TTY)

The National Domestic Violence Hotline offers phone and chat services for anyone affected by domestic violence. Support is available 24/7/365 by calling **1.800.799.SAFE (7233)** or online at **thehotline.org**.

The production of this material was supported by Grant #90SV0001-01-00 from HHS Administration for Children and Families/Family Youth Services Bureau. Its contents are solely the responsibility of the National Domestic Violence Hotline and do not necessarily represent the official views of ACF/FYSB.

	2012		2013		2014	
	12 months	Average	12 months	Average	5 months	Average
Calls Received	264,156	22,013	248,530	20,711	101,794	20,359
Calls Answered	212,232	17,686	198,629	16,552	70,172	14,034
Website Visits	512,330	42,694	655,732	54,644	276,480	55,296
Chats Received					3,617	723
Chats Answered					2,312	462

ADDRESSING THE HEALTH CONSEQUENCES OF DOMESTIC VIOLENCE

HealthCaresAboutIPV.org

Health Cares About IPV

Intimate Partner Violence
Screening and Counseling Toolkit

- Introduction
- Getting Started
- How to Screen
- Specific Settings
- Advocacy Tools

Reproductive Health

Did you know that intimate partner violence can directly impact a woman's reproductive and sexual health — increasing risk for unintended pregnancies and abortions, miscarriage and HIV/AIDS infection?

What's New?

A New Standard of Care for Victims of Violence

Puzzled by all the details in new health policy changes that benefit millions of women and girls? We're here to help.

In February of 2013, the U.S. Preventive Services Task Force issued new recommendations to support screening and response to intimate partner violence (IPV), also known as domestic violence (DV), and designated it with a "B" grade – recommending that health plans provide the service. With this and other new coverage requirements for screening and response, addressing DV in the health setting is becoming the

Tell Us Your Story

Please tell us about your work with survivors. We would like to know how the resources in this toolkit support the health and safety of your patients or clients.

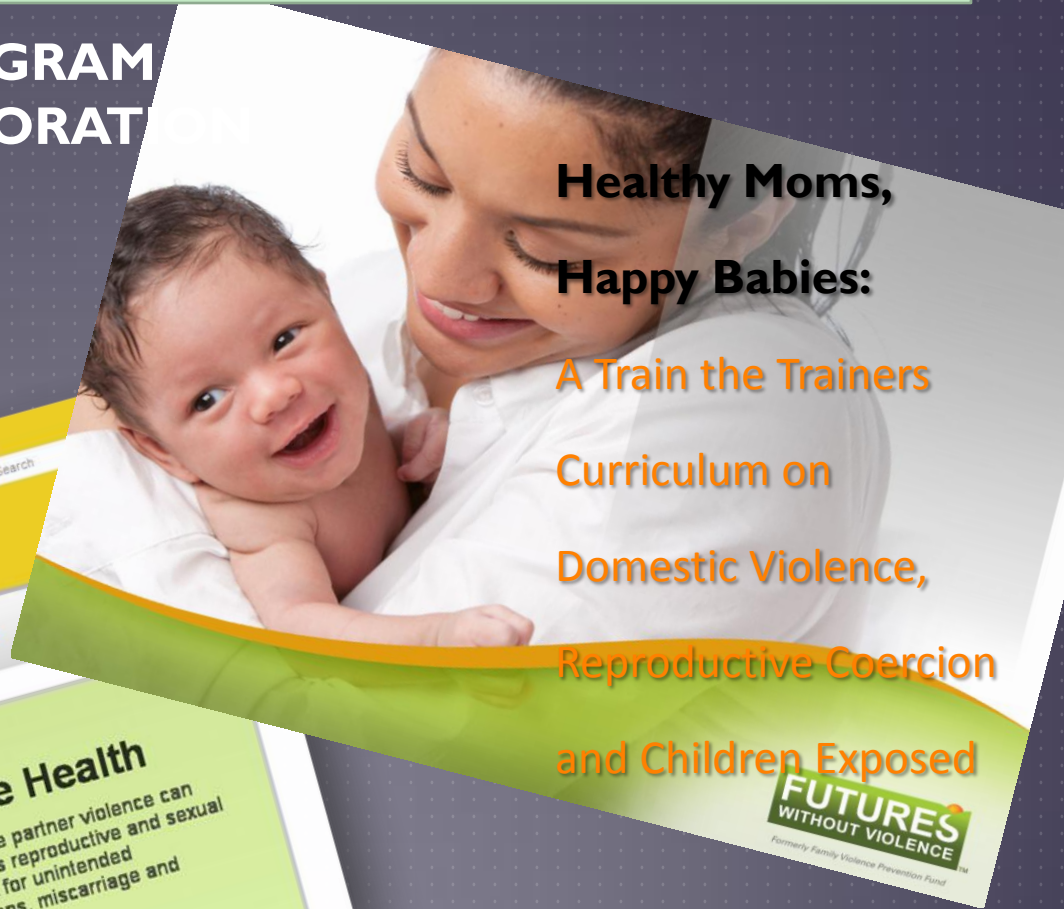
[Learn more](#)

Technical Assistance

Health & Domestic Violence Awareness at HHS

HRSA'S DISCUSSION OF PROGRAM
IMPLICATIONS AND COLLABORATION
OPPORTUNITIES FOR DVAM
AUGUST 2011

www.healthcaresaboutipv.org



**Healthy Moms,
Happy Babies:**

**A Train the Trainers
Curriculum on
Domestic Violence,
Reproductive Coercion
and Children Exposed**

**FUTURES
WITHOUT VIOLENCE**
Formerly Family Violence Prevention Fund

Health Cares About IPV

Intimate Partner Violence
Screening and Counseling Toolkit

Introduction

Getting Started

How to Screen

Specific Settings

Reproductive Health

Did you know that intimate partner violence can directly impact a woman's reproductive and sexual health — increasing risk for unintended pregnancies and abortions, miscarriage and HIV/AIDS infection?



PROMOTING AN EVIDENCE BASE FOR DOMESTIC VIOLENCE SERVICES

<http://www.dvevidenceproject.org>

Domestic Violence Evidence Project

A project of the National Resource Center on Domestic Violence

Focus Areas | What Works | Evaluation Tools | Publications | Nominate a Program | About the Project | Search

Key Services to Adult Victims of Domestic Violence

"Shelters" include all of the services that women's shelters, refuges, safe homes, and anti-violence centers provide. This definition is consistent with the Global Network of Women's Shelters' definition. We recognize that in some places, programs or community centers provide services and resources for victims but may not have a physical shelter building or may not offer shelter services.

Why do we do what we do?

What Is Our Theory Of Change?

- Examining the Work of Local Domestic Violence Programs within a "Social and Emotional Well-Being Promotion" Conceptual Framework
- Titles Logic Models

How Can I Learn More?

- List of Publications
- Research Bibliography

How do we know we are making a difference?

What Does The Research Tell Us About:

- Shelter
- Advocacy
- Counseling
- Support Groups
- More...

How Do We Document And Evaluate Our Services To Victims?

- Tools
- Technical Assistance
- Links

How Can I Learn More?

- List of Publications

Where are we going? What are we learning?

What Works In Communities?

- Community Advocacy Project
- Caminar Latino Project
- More...

How Do I Adapt Or Transform My Community?

Critical Thinking

Promising Futures

Best Practices for Serving Children, Youth, and Parents Experiencing Domestic Violence

What do kids need?

Program Readiness

Interventions for Children & Youth

Advancing the Field

Tools



Resources & Information for Families

Help caregivers support healing and resiliency for children & Youth

What's New?

How to Use this Website

We hope that you find this a useful resource for helping you transform your program's ability to effectively meet the needs of women, children and youth experiencing domestic violence. If you are just starting to think about...

Share Your Work

Please tell us about all of the innovative work you and others are doing in your community.

Share

DV Evidence Project

Visit our sister website which combines research, evaluation, practice and theory to inform critical

<http://promising.futureswithoutviolence.org>

EXPANDING SERVICES AND SUPPORTS TO THOSE AT THE MARGINS

RUNAWAY & HOMELESS YOUTH AND RELATIONSHIP VIOLENCE TOOLKIT

GUIDANCE AND MATERIALS FOR PRACTITIONERS

- 1 NEW! CRITICAL ISSUES
- 2 KEY TERMS AND RESOURCES
- 3 FINDING COMMON GROUND
- 4 A LOOK AT EACH FIELD
- 5 BUILDING PARTNERSHIPS
- 6 BUILDING SERVICES
- 7 MEASURING SUCCESS
- 8 NEW! PRACTICE TOOLS



INTRODUCTION

Runaway and homeless youth agencies and domestic violence victims' services providers share a mutual goal: enhancing the safety and healing of young people living situations marked by violence and abuse. Recognizing and understanding the intersection of runaway and homeless youth and intimate partner violence (including dating, domestic and sexual violence) is critical to creating meaningful services and effective intervention and prevention strategies for both homelessness and relationship abuse, and in creating partnerships between the programs working with youth at risk.

WHY IS THIS IMPORTANT?

Witnessing the ongoing abuse of a parent or experiencing child abuse, threats, or actual physical

TEENS IN NEED

CLICK HERE FOR HELPFUL LINKS



“Homelessness among young people is a serious and complex issue. On any given night, the National Runaway Switchboard estimates that there are approximately 1.3 million homeless, throwaway, and runaway youth living

PROVIDING SERVICES, PROTECTIONS AND RAISING AWARENESS

FVPSA



New Online Learning Tool Teaches the Basics of Domestic Violence

March 5, 2013

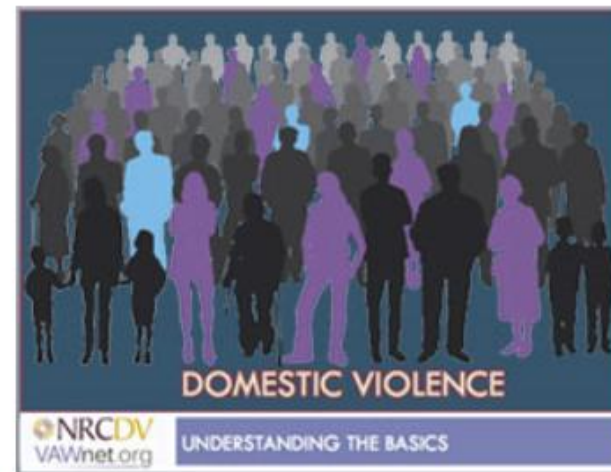
SHARE

Like 6

Share

The Family Violence Prevention and Services Program is pleased to announce the launch of [Domestic Violence: Understanding the Basics](#), an online learning tool developed by FYSB grantee, the [National Resource Center on Domestic Violence](#) and [VAWnet](#), the National Online Resource Center on Violence Against Women.

This 1-hour interactive eLearning module describes the dynamics and common tactics that characterize domestic violence, provides an overview of the scope and impact on individuals and society, explores the underlying factors that allow domestic violence to exist, offers insight into the various risks and choices that survivors face, and shares how to be part of the solution.





October is Domestic Violence Awareness Month
