



READINESS AND FORCE  
MANAGEMENT

OFFICE OF THE ASSISTANT SECRETARY OF DEFENSE  
4000 DEFENSE PENTAGON  
WASHINGTON, D.C. 20301-4000

MAY 20 2014

MEMORANDUM FOR ASSISTANT SECRETARY OF DEFENSE (PUBLIC AFFAIRS)  
DEPUTY ASSISTANT SECRETARY OF THE ARMY  
(MILITARY PERSONNEL AND QUALITY OF LIFE)  
DEPUTY ASSISTANT SECRETARY OF THE NAVY  
(MILITARY MANPOWER AND PERSONNEL)  
DEPUTY ASSISTANT SECRETARY OF THE AIR FORCE  
(AIR FORCE MANAGEMENT INTEGRATION)

SUBJECT: Department of Defense Family Advocacy Program Fiscal Year 2013 Data

The Department is committed to preventing domestic abuse and child abuse and neglect within the military community. These are readiness issues in which we all have an obligation to take appropriate action if we feel the safety of someone vulnerable may be at risk.

Attached for your information is the data package for the Department of Defense (DOD) Family Advocacy Program (FAP) domestic and child abuse data for Fiscal Year (FY) 2013. This package, which includes data tables, briefing slides, and a summary of key findings, is forwarded annually to demonstrate how the DoD FAP calculates and tracks aggregate domestic and child abuse data and to assist in responding to related internal and external queries.

DoD FAP data begins with FY01 data, which serves as a relative baseline prior to the start of combat operations following September 11, 2001. Intimate partner violence was added as a category in FY06 to capture incidents involving a person (1) with whom the victim shares a child in common, or (2) is a current or former partner with whom the victim shares or has shared a common domicile.

In FY13, 15,920 incidents met the DoD criteria for domestic and child abuse, a decrease of 337 incidents from the FY12 total of 16,257. Additionally, since FY12, there was a decrease in the rate per thousand of spouse abuse, but there was an increase in the rate per thousand of child abuse incidents that met criteria for abuse. This increase in child abuse reports and incidents primarily involved child neglect, which accounted for 58 percent of these incidents.

The Office of the Secretary of Defense FAP is working in concert with your Service FAP leaders to identify at-risk communities and intensify prevention efforts. This aggregate data provides additional detail to inform decisions related to prevention and intervention efforts. With your continued support, we endeavor to ensure the safety and well-being of all military families.

Rosemary F. Williams  
Deputy Assistant Secretary of Defense  
(Military Community and Family Policy)

Attachments:  
As stated

**Department of Defense Family Advocacy Program  
Child Abuse/Neglect and Domestic Abuse Data Trends from FY01 to FY13**

Spouse Abuse Reported to the Family Advocacy Program (FAP):

<u>Year</u>	<i>Couples</i>	<i>Total</i>		<i>Met Criteria</i>	
	<u>Population</u>	<u>Reports</u>	<u>Rate/1000</u>	<u>Reports</u>	<u>Rate/1000</u>
FY 01	664,701	18,398	27.7	10,967	16.5
FY 02	682,656	17,909	26.2	10,546	15.4
FY 03	694,527	17,072	24.6	9,845	14.2
FY 04	698,160	16,392	23.5	9,434	13.5
FY 05	702,727	15,894	22.6	8,306	11.8
FY 06	707,895	15,399	21.7	7,586	10.7
FY 07	708,178	15,260	21.5	7,257	10.2
FY 08	718,526	15,939	22.2	6,767	9.4
FY 09	738,067	18,208	24.7	7,476	10.1
FY 10	751,758	18,785	25.0	8,411	11.2
FY 11	753,110	19,277	25.6	8,386	11.1
FY 12	734,308	18,671	25.4	8,345	11.4
FY 13	713,135	17,295	24.3	7,935	11.1

Intimate Partner Abuse Reported to the FAP:

<u>Year</u>	<i>Unmarried</i>	<i>Met Criteria</i>	<i>Met Criteria</i>
	<u>Population</u>	<u>Reports</u>	<u>Rate/1000</u>
FY 06	617,848	340	0.5
FY 07	611,316	602	1.0
FY 08	622,858	619	0.9
FY 09	620,542	747	1.2
FY 10	618,549	721	1.2
FY 11	612,358	867	1.4
FY 12	609,723	909	1.5
FY 13	613,589	996	1.6

Child Abuse Reported to the FAP:

<u>Year</u>	<i>Child</i>	<i>Total</i>		<i>Met Criteria</i>	
	<u>Population</u>	<u>Reports</u>	<u>Rate/1000</u>	<u>Reports</u>	<u>Rate/1000</u>
FY 01	1,127,492	15,898	14.1	7,612	6.8
FY 02	1,145,001	16,683	14.6	7,556	6.6
FY 03	1,149,764	16,354	14.2	7,463	6.5
FY 04	1,120,590	16,704	14.9	7,881	7.0
FY 05	1,104,716	13,852	12.5	6,178	5.6
FY 06	1,103,362	12,612	11.4	5,603	5.1
FY 07	1,103,270	13,788	12.5	5,434	4.9
FY 08	1,122,098	12,661	11.3	5,406	4.8
FY 09	1,147,318	12,847	11.2	5,499	4.8

FY 10	1,166,079	14,986	12.9	6,633	5.7
FY 11	1,165,812	15,081	12.9	6,819	5.8
FY 12	1,140,024	15,656	13.7	7,003	6.1
FY 13	1,009,702	15,346	14.0	6,989	6.4

- FY01 through FY13 data on spouse abuse includes only those incidents involving married individuals. Either the victim or the abuser may have been an active duty Service member or the civilian spouse of an active duty Service member. In FY06 and onward, an additional category, “intimate partner,” was added to capture incidents involving a person (1) with whom the victim shares a child in common, or (2) is a current or former partner with whom the victim shares or has shared a common domicile. In such cases, the victim or the abuser may have been an active duty Service member or a civilian.
- Reports represent the number of incidents of alleged abuse; therefore, one or more reports may be submitted on a single victim. This allows for the identification of families in which repeated acts of family violence have occurred.
- The data only reflects child abuse/neglect and domestic abuse reported to the DoD FAP. It is not an estimate of the total amount of child abuse and domestic abuse that occurred in military families.
- The data includes physical abuse (including acts resulting in no injuries), sexual abuse, emotional abuse (including emotional abuse without any acts of physical or sexual abuse), and child neglect.
- In reports that met the DoD criteria for abuse, the abuser may have been an active duty Service member, a civilian family member, or (in child abuse/neglect incidents) a caregiver outside the family. However, in 97 percent of the met criteria child abuse/neglect incidents, the abuser was a parent or other family member.
- This data should not be compared to data from other studies unless:
  - Differences in military and civilian contexts have been addressed;
  - The studies’ design and methodologies were similar (e.g., reports to authorities should not be compared to estimates from surveys of the population);
  - The data elements were similar; and,
  - The demographics from the studies are standardized to the military population, which is much younger and more male than the general civilian population.
- The DoD rates of child abuse have remained relatively constant and are about half of their counterpart rates in the U.S. civilian population as compiled by the U.S. Department of Health and Human Services.



# DEPARTMENT OF DEFENSE

## *FAMILY ADVOCACY PROGRAM CHILD ABUSE/NEGLECT (CAN) DATA FY13 Report*



# CAN\* Incidents FY01-13



Year	Child Population	Total		Met Criteria	
		Reports**	Rate/1000	Reports**	Rate/1000
FY01	1,127,492	15,898	14.1	7,612	6.8
FY02	1,145,001	16,683	14.6	7,556	6.6
FY03	1,149,764	16,354	14.2	7,463	6.5
FY04	1,120,590	16,704	14.9	7,881	7.0
FY05	1,104,716	13,852	12.5	6,178	5.6
FY06	1,103,362	12,612	11.4	5,603	5.1
FY07	1,103,270	13,788	12.5	5,434	4.9
FY08	1,122,098	12,661	11.3	5,406	4.8
FY09	1,147,318	12,845	11.2	5,499	4.8
FY10	1,166,079	14,986	12.9	6,633	5.7
FY11	1,165,812	15,081	12.9	6,819	5.8
FY12	1,140,024	15,656	11.4	7,003	6.1
FY13	1,009,702	15,346	14.0	6,989	6.4

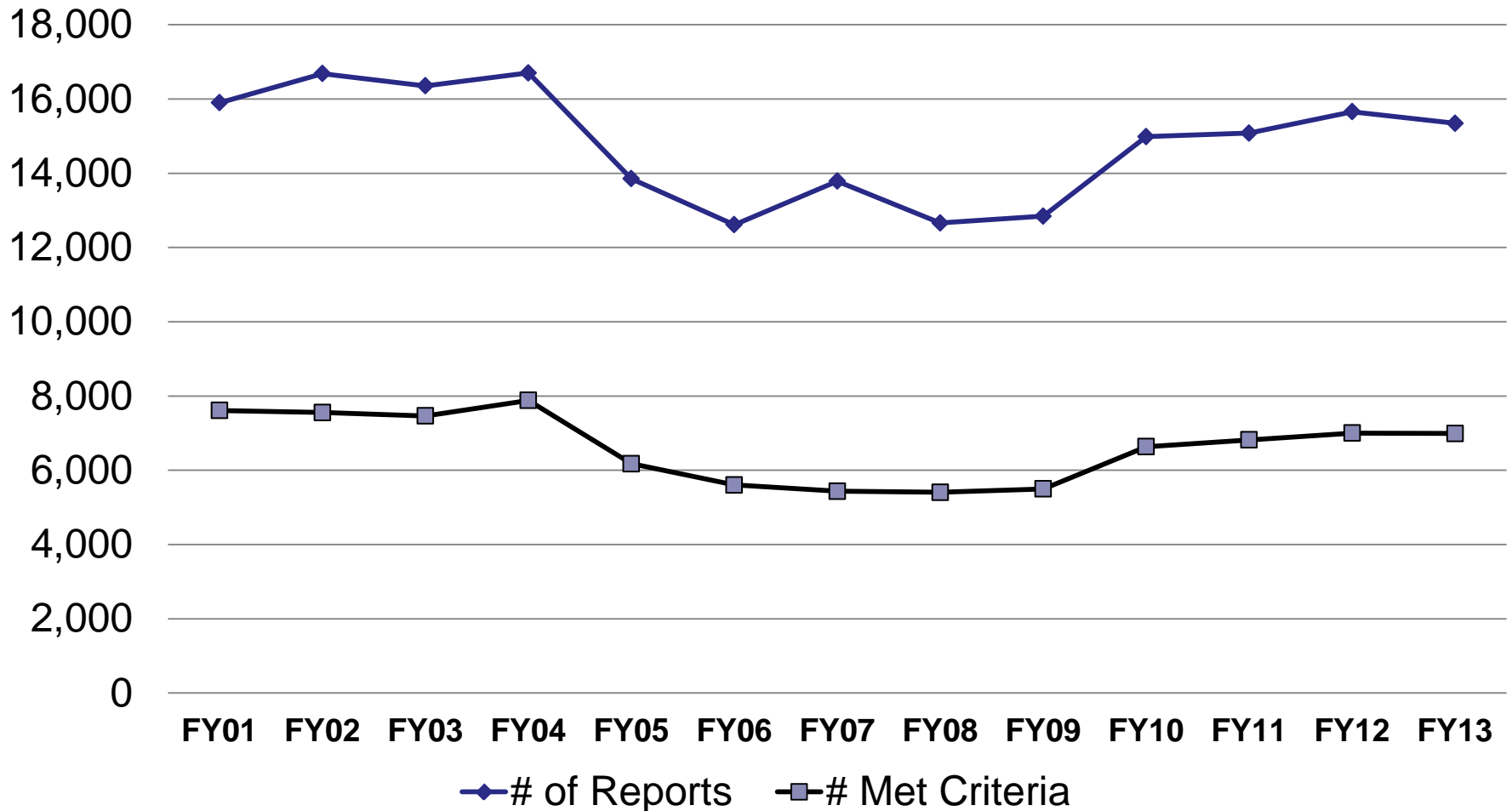
\*Abuse includes acts of physical violence, and/or sexual violence, and/or emotional abuse, and/or neglect

\*\* Reports represent # incidents of abuse; one or more reports may be submitted on a single victim.



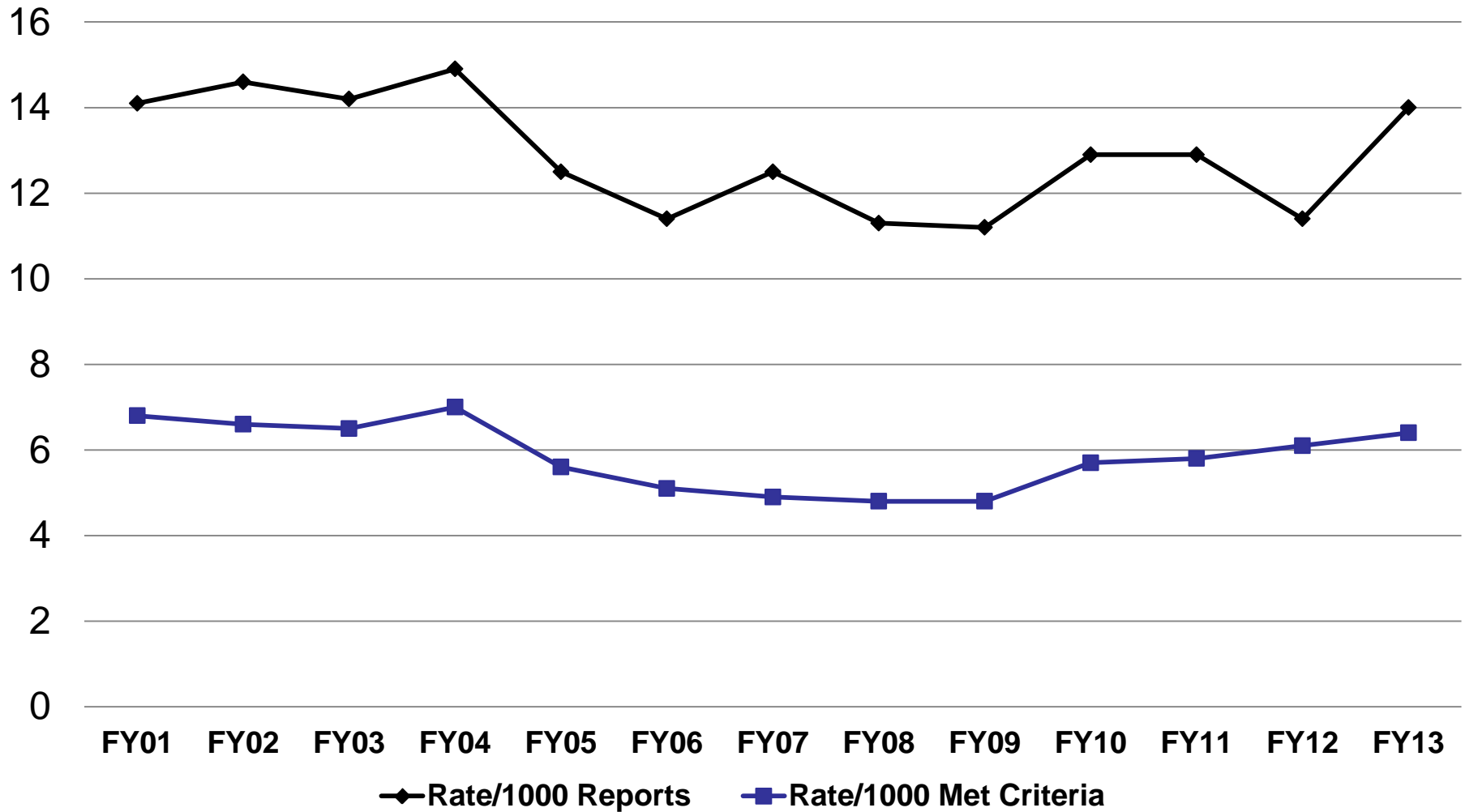
# CAN

## Number of Reports vs Met Criteria





# CAN Rate/1000 Reports vs Met Criteria





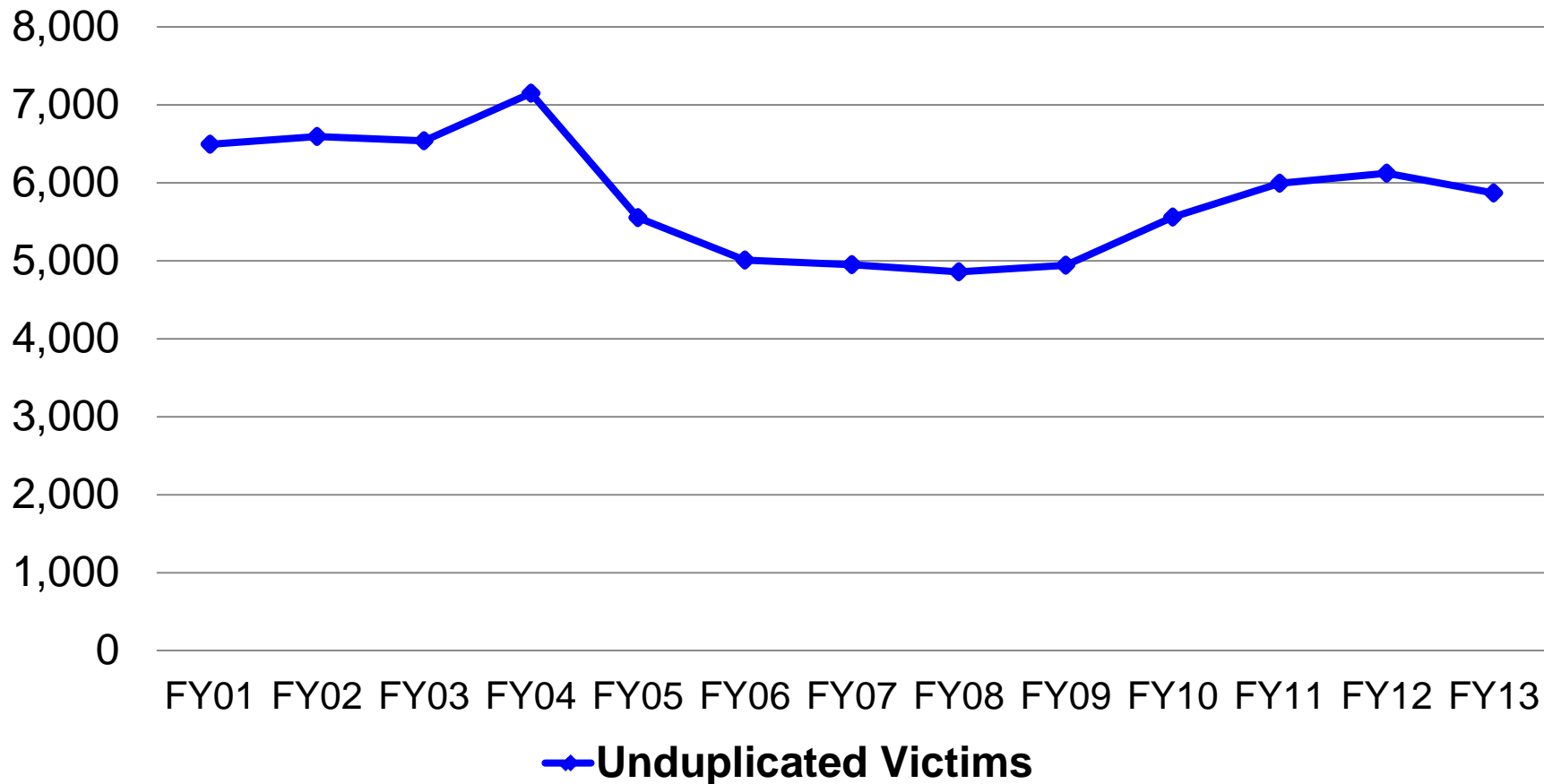
# FY01-13 CAN Victims

	Met Criteria Incidents	Victims	Children	Rate Per 1000 Children	Victims Per 1000 Children
FY01	7,612	6,496	1,127,492	6.8	5.8
FY02	7,556	6,596	1,145,001	6.6	5.8
FY03	7,463	6,538	1,149,764	6.5	5.7
FY04	7,881	7,152	1,120,590	7.0	6.4
FY05	6,178	5,555	1,104,716	5.6	5.0
FY06	5,603	5,009	1,103,362	5.1	4.5
FY07	5,434	4,951	1,103,270	4.9	4.5
FY08	5,406	4,857	1,122,098	4.8	4.3
FY09	5,499	4,944	1,147,318	4.8	4.3
FY10	6,633	5,560	1,166,079	5.7	4.7
FY11	6,819	5,994	1,165,812	5.8	5.1
FY12	7,003	6,123	1,140,024	6.1	5.4
FY13	6,989	5,871	1,009,702	6.4	5.8





# Number of Child Victims in Met Criteria Incidents





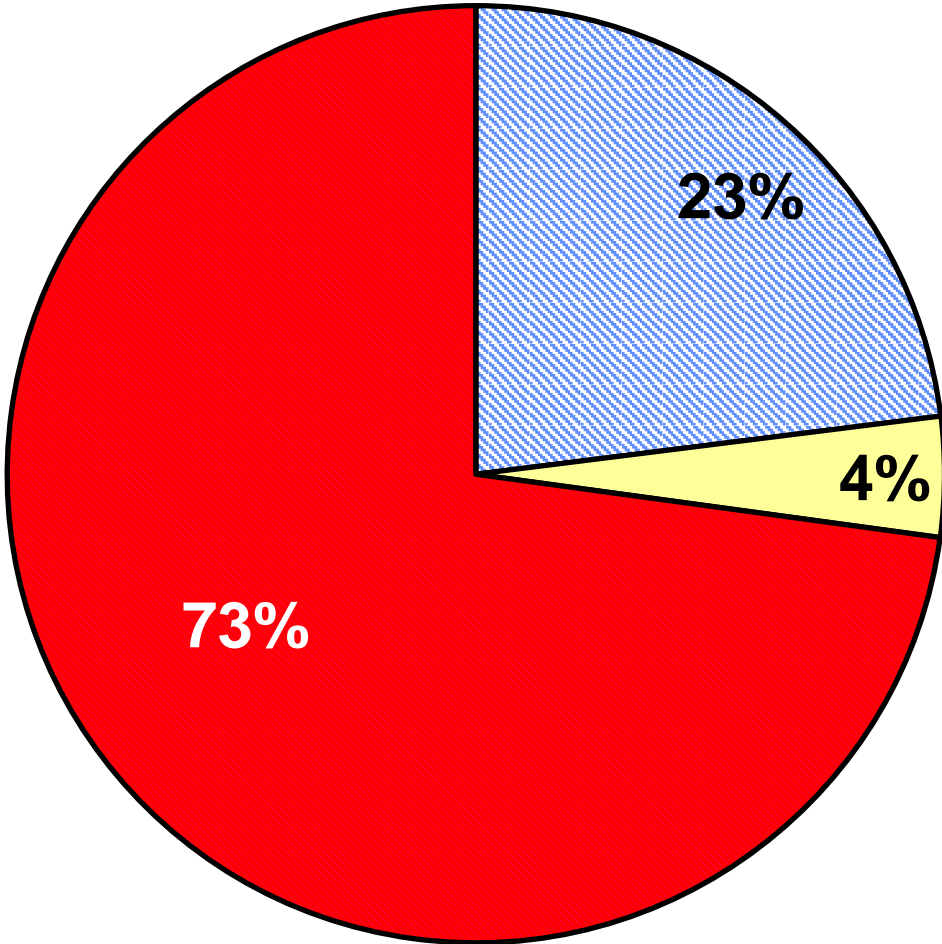
# CAN Fatalities Reported to FAP

- 31 Fatalities
  - 8 Child victims previously reported to FAP
  - 8 Alleged abusers previously reported to FAP
  - 17 Fatalities were less than one year old
- Sex & status of alleged abusers
  - Male 57%
  - Active Duty 60%
- Age of Victims
  - Age range Birth -15 yrs
  - Mean age 1 yr
  - Median age <1 yr

FY13 FAP Data

(Fatality reviews to be conducted in FY15)

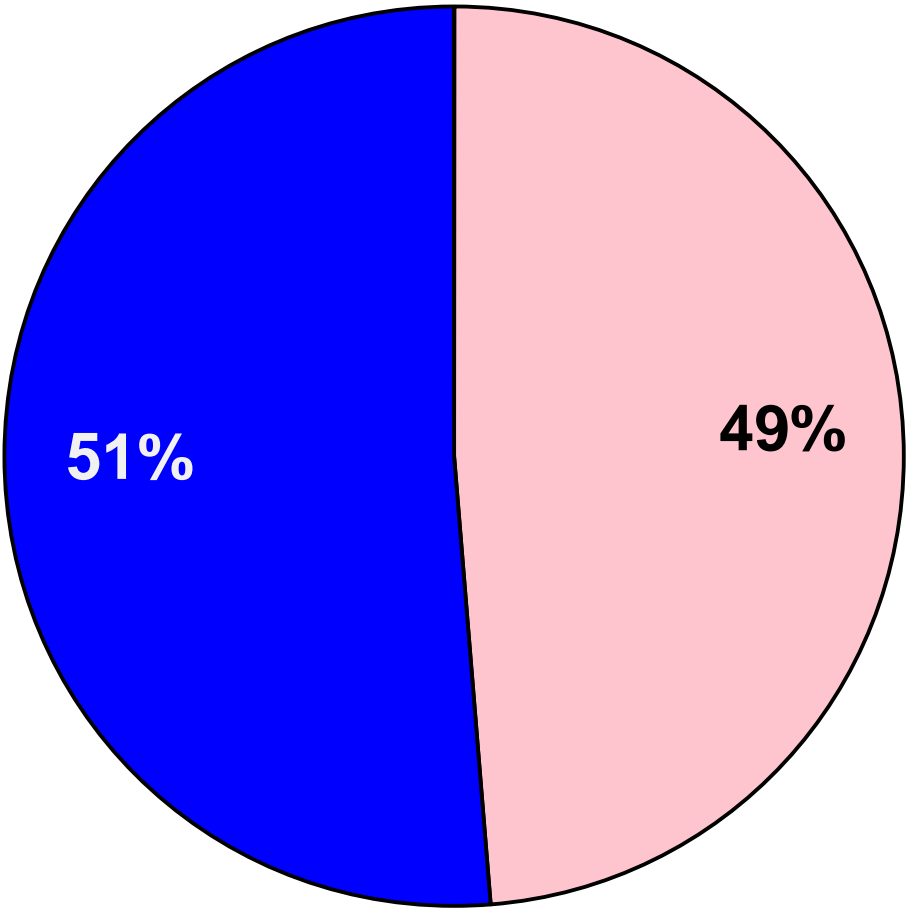
# Type of CAN in Met Criteria Incidents



- Any physical abuse without sexual abuse
- Any sexual abuse
- Emotional abuse or neglect only

FY13 FAP Data

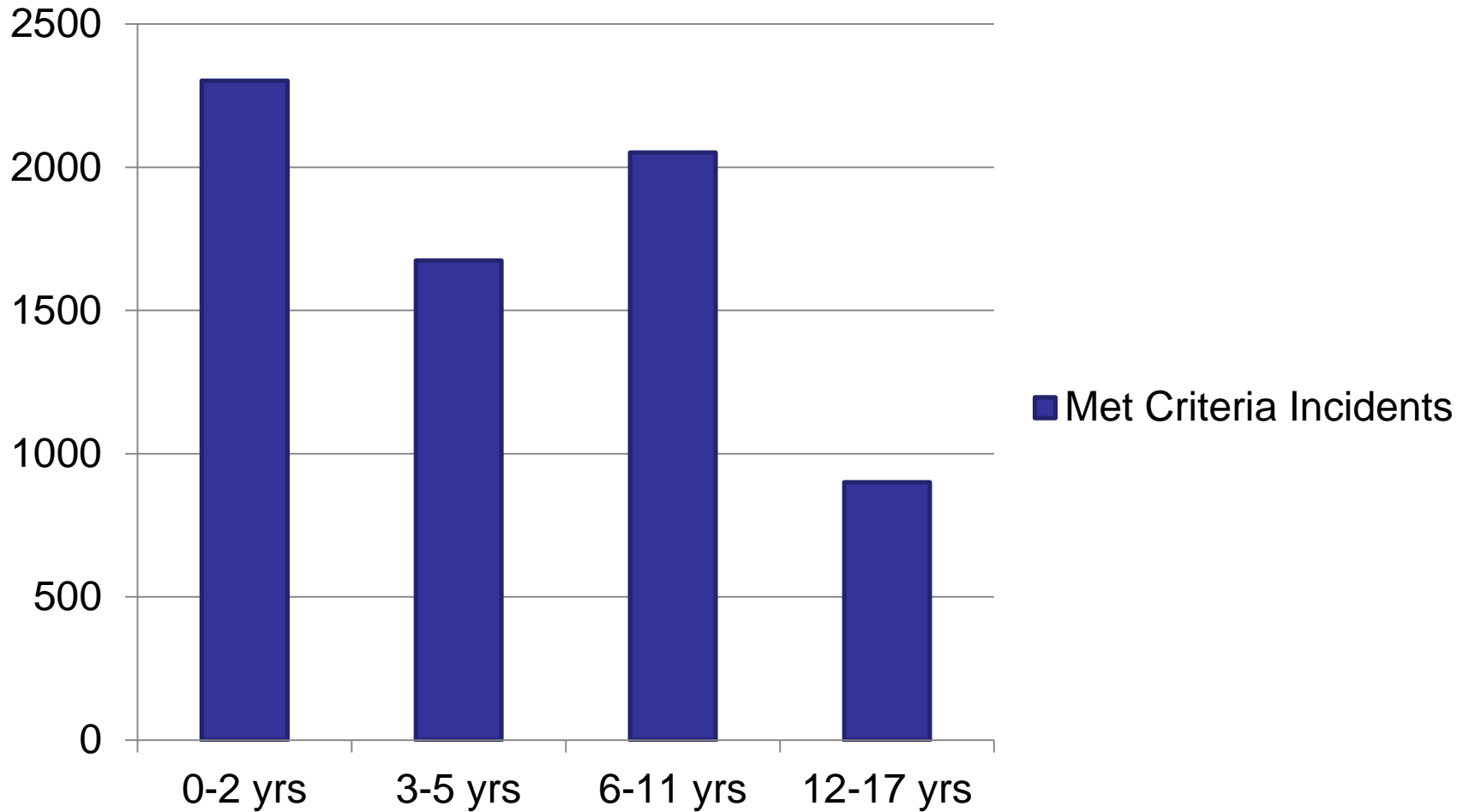
# Sex of CAN Victim in Met Criteria Incidents



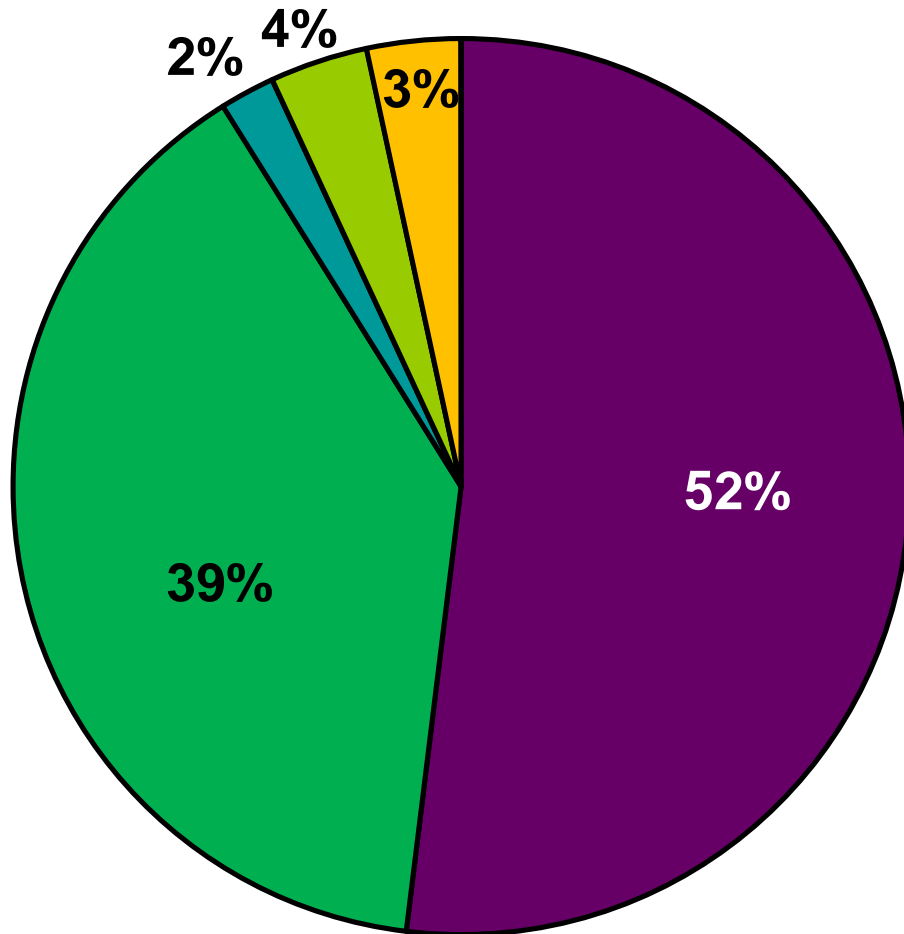
□ Female    ■ Male

FY13 FAP Data

# Met Criteria CAN Incidents by Age of Victim



# Status of Alleged Child Abuser in Met Criteria CAN Incidents

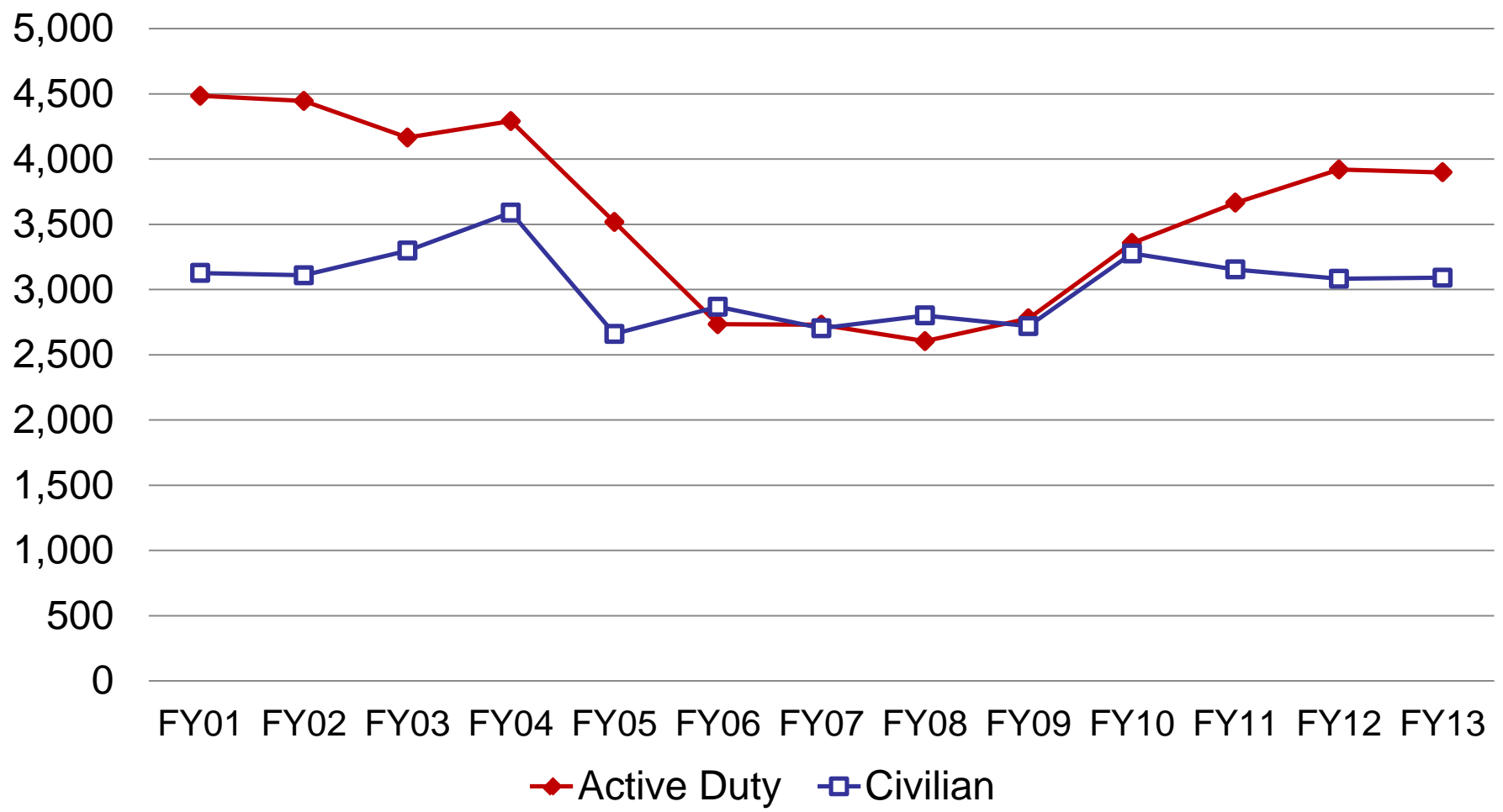


- Active Duty Parent
- Civilian Parent
- Extrafamilial Caregiver
- Other Family Member
- Unknown

FY13 FAP Data

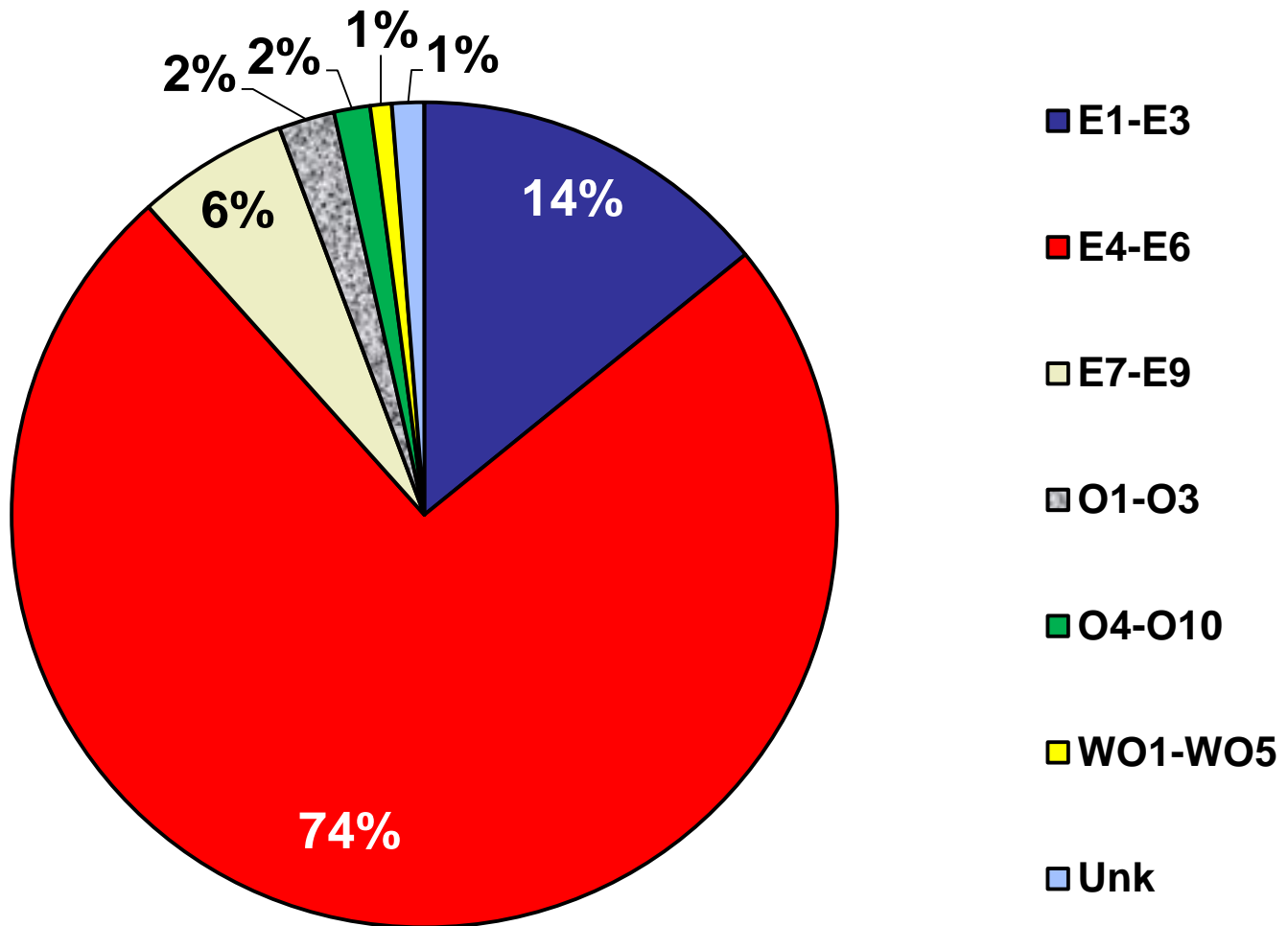


# Status of Alleged Abuser in Met Criteria CAN Incidents



FY13 FAP Data

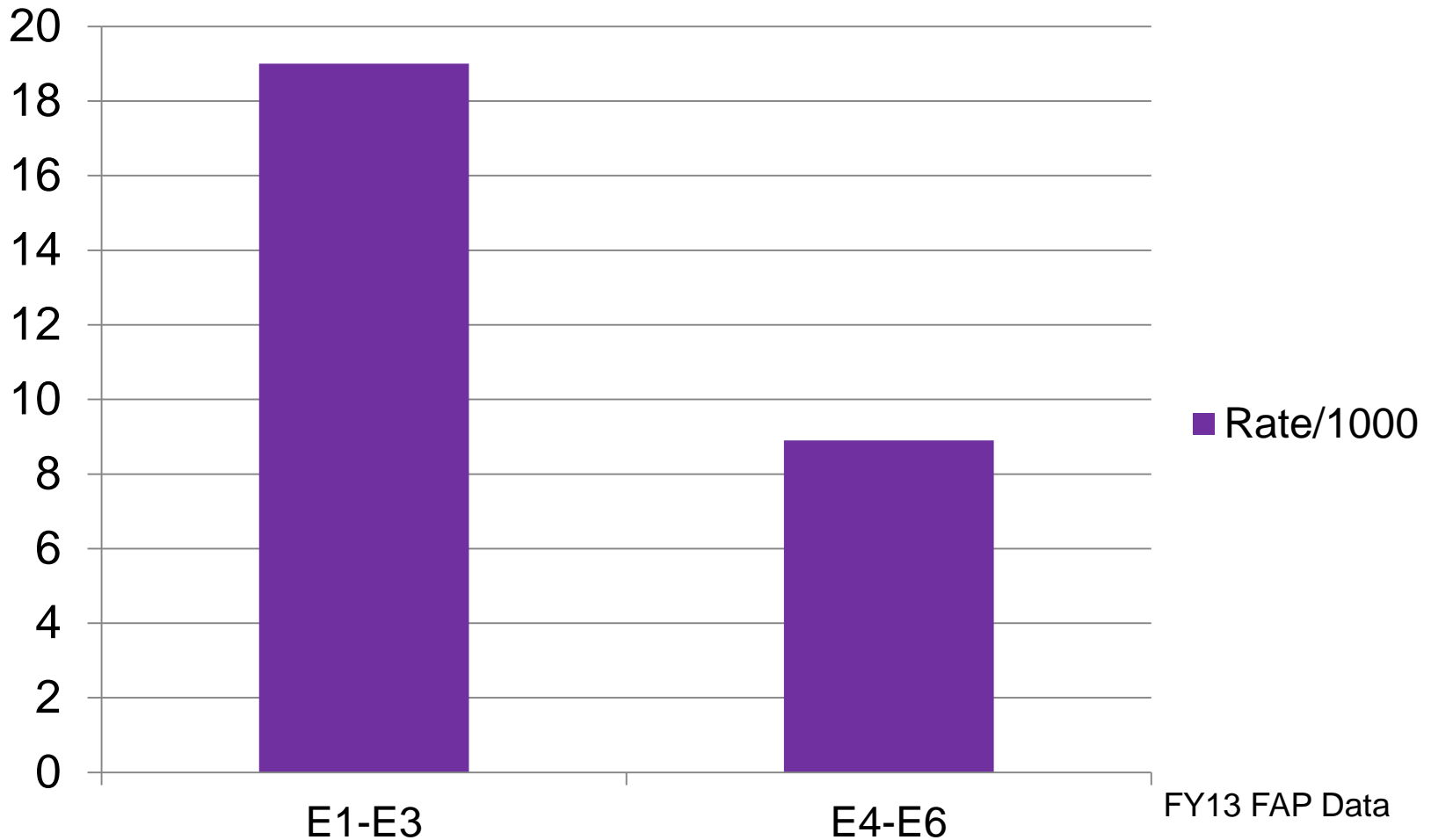
# Met Criteria CAN Incidents by Alleged Abuser Pay Grade







# Rate/1000 of Alleged CAN Abusers in Pay Grades with Highest Numbers

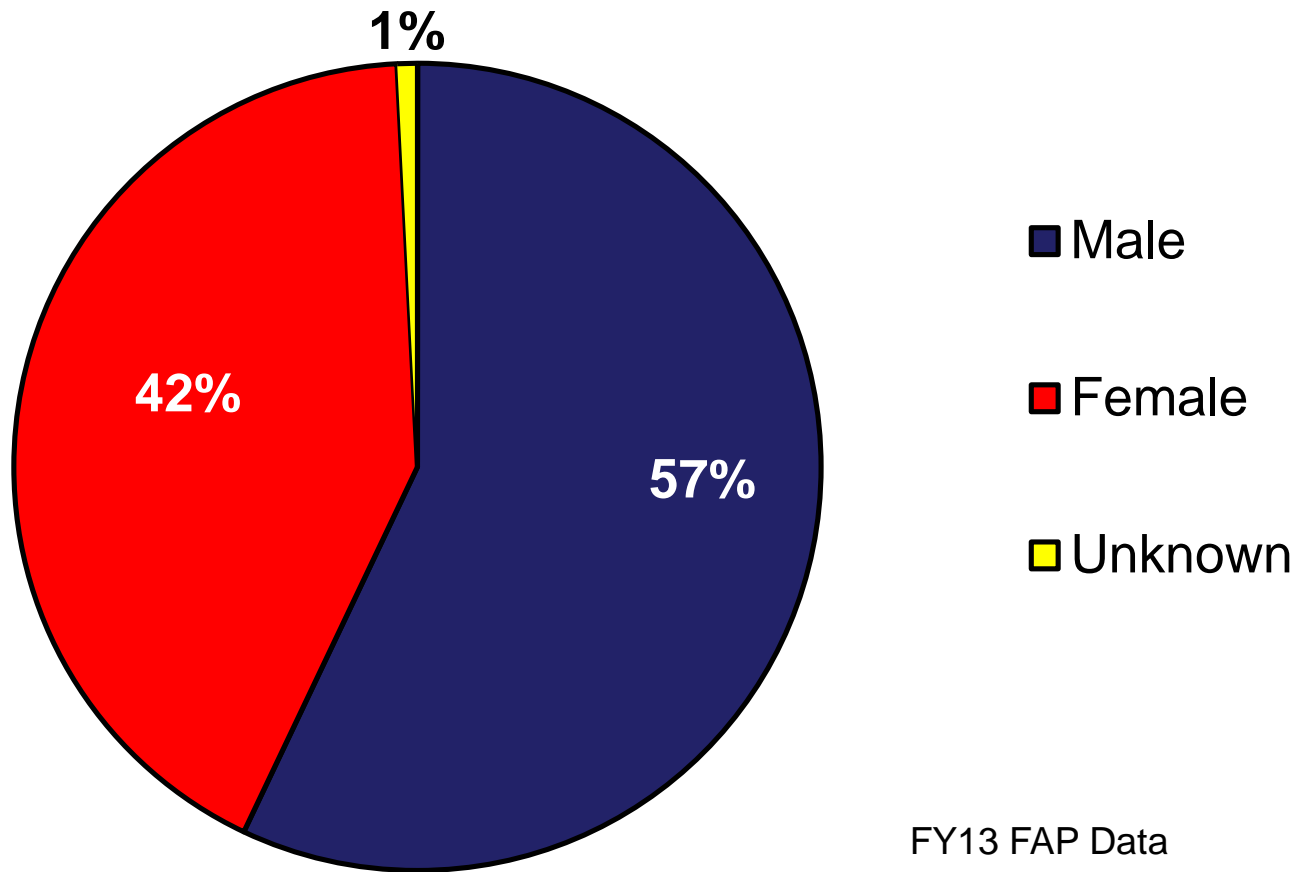


# Sex of Alleged Child Abuser in Met Criteria Incidents



Year	Male	Female	Unknown	Total
FY01	4,516	2,871	225	7,612
FY02	4,373	2,951	232	7,556
FY03	4,112	3,130	221	7,463
FY04	4,220	3,423	238	7,881
FY05	3,418	2,611	149	6,178
FY06	2,910	2,573	120	5,603
FY07	2,850	2,520	64	5,434
FY08	2,753	2,585	68	5,406
FY09	2,907	2,499	93	5,499
FY10	3,458	3,038	137	6,633
FY11	3,671	3,062	86	6,819
FY12	3,955	2,934	114	7,003
FY13	3,989	2,944	56	6,989

# Sex of Alleged Child Abuser in Met Criteria Incidents



FY13 FAP Data



# DEPARTMENT OF DEFENSE

## *FAMILY ADVOCACY PROGRAM*

## *DOMESTIC ABUSE (DA) DATA*

## *FY13 Report*



# FY01-13 Spouse Abuse\*



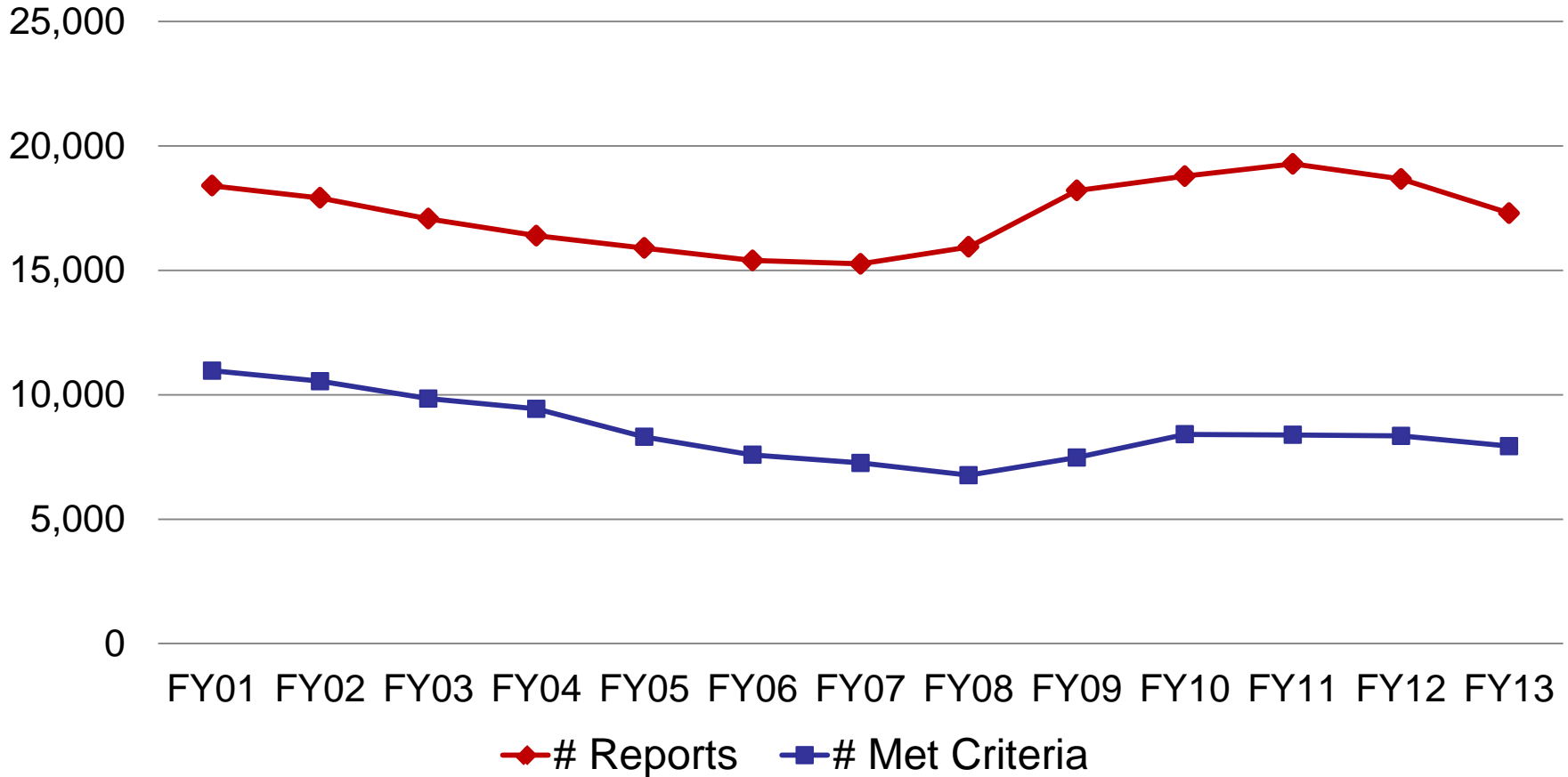
Year	Couples Population	Total		Met Criteria	
		Reports**	Rate/1000	Reports**	Rate/1000
FY01	664,701	18,398	27.7	10,967	16.5
FY02	682,656	17,909	26.2	10,546	15.4
FY03	694,527	17,072	24.6	9,845	14.2
FY04	698,160	16,392	23.5	9,434	13.5
FY05	702,727	15,894	22.6	8,306	11.8
FY06	707,895	15,399	21.7	7,586	10.7
FY07	708,178	15,260	21.5	7,257	10.2
FY08	718,526	15,939	22.2	6,767	9.4
FY09	738,067	18,208	24.7	7,476	10.1
FY10	751,758	18,785	25.0	8,411	11.2
FY11	753,110	19,277	25.6	8,386	11.1
FY12	734,308	18,671	25.4	8,345	11.4
FY13	713,135	17,295	24.3	7,935	11.1

\*Abuse includes acts of physical violence, and/or sexual violence, and/or emotional abuse, and/or neglect

\*\*Reports represent # incidents of abuse; one or more reports may be submitted on a single victim.



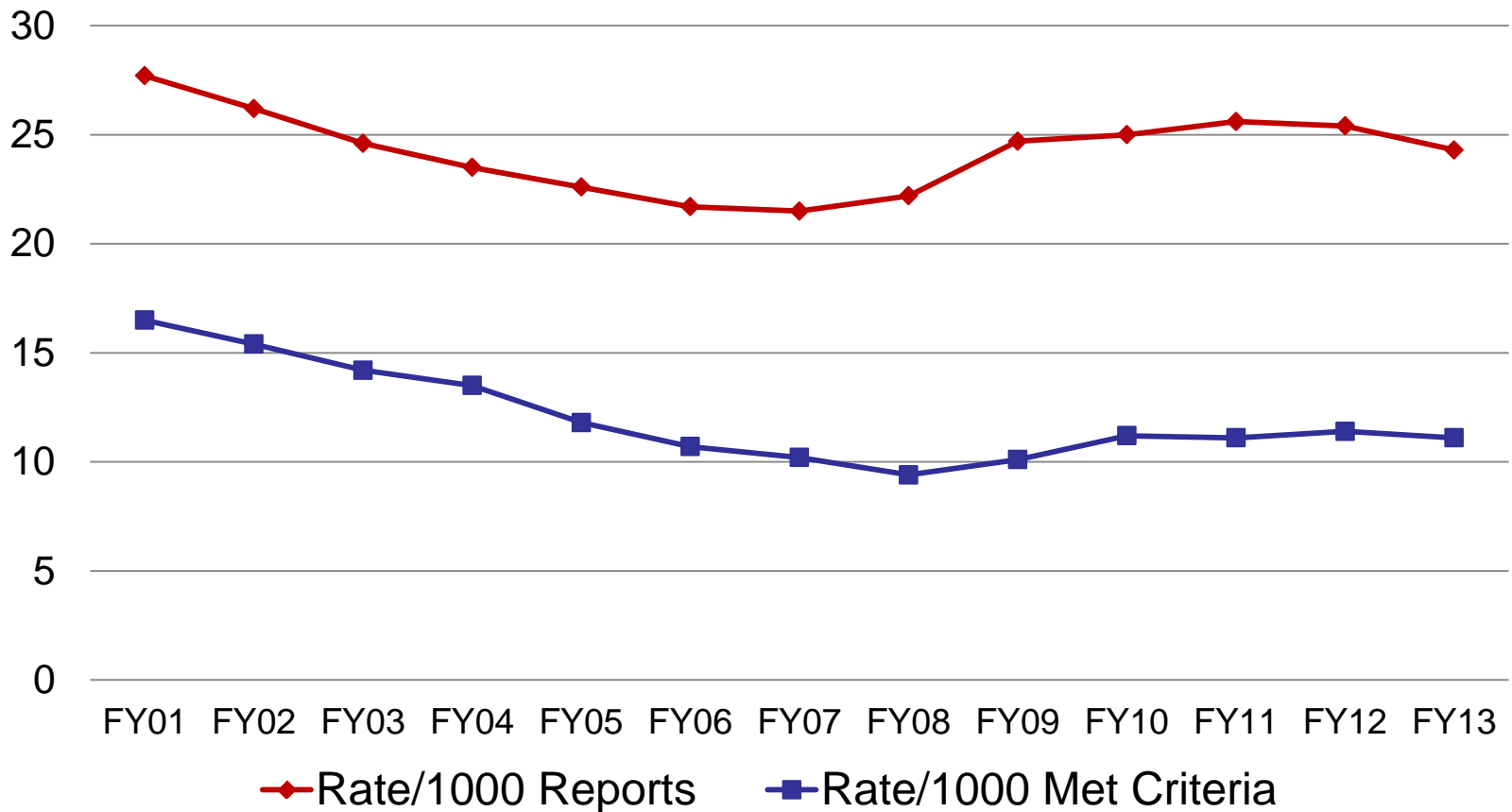
# Spouse Abuse Number of Reports vs Met Criteria



FY13 FAP Data



# Rate/1000 Reports vs Met Criteria



FY13 FAP Data



# Former Spouse/Intimate Partner

Year	Unmarried Population	Met Criteria Reports	Met Criteria Rate/1,000
FY06	617,848	304	0.5
FY07	611,316	602	1.0
FY08	622,858	619	0.9
FY09	620,542	747	1.2
FY10	618,549	721	1.2
FY11	612,358	867	1.4
FY12	609,723	909	1.5
FY13	613,589	996	1.6

In FY 06 an additional category was added to capture met criteria incidents involving a (1) former spouse, a person (2) with whom the victim shares a child in common or (3) who is a current or former intimate partner with whom the victim shares or has shared a common domicile.

FY13 FAP Data



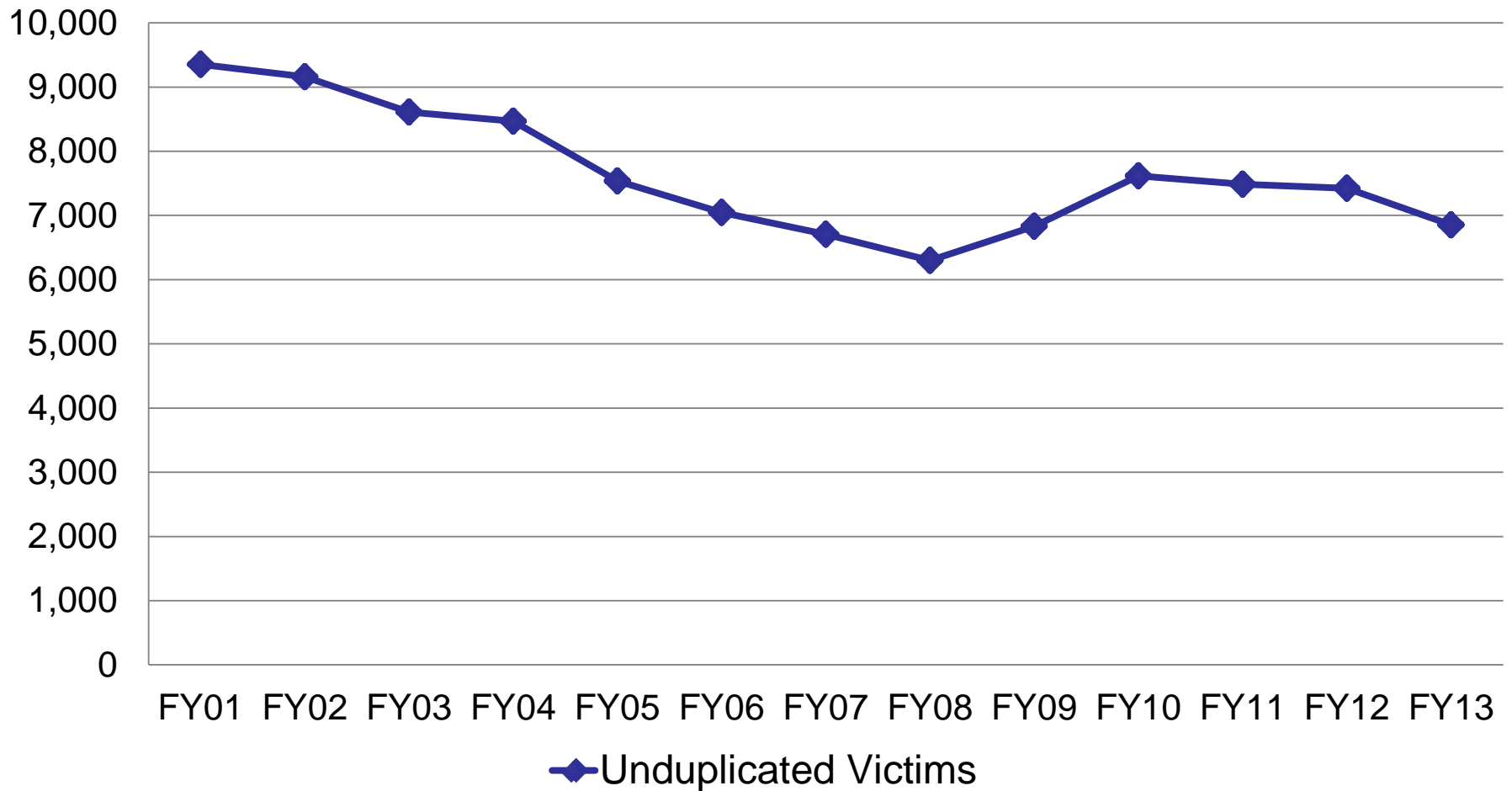


# Met Criteria Spouse Abuse Reports FY01-13

Year	Incidents	Victims	Couples	Incidents/1000 Couples	Victims/1000 Couples
FY01	10,967	9,351	664,701	16.5	14.1
FY02	10,546	9,159	682,656	15.4	13.4
FY03	9,845	8,610	694,527	14.2	12.3
FY04	9,434	8,467	698,160	13.5	12.1
FY05	8,306	7,538	702,727	11.8	10.7
FY06	7,586	7,047	707,895	10.7	9.9
FY07	7,257	6,707	708,178	10.2	9.5
FY08	6,767	6,299	718,526	9.4	8.7
FY09	7,467	6,834	738,067	10.1	9.3
FY10	8,411	7,618	751,758	11.2	10.1
FY11	8,386	7,485	753,110	11.1	9.9
FY12	8,345	7,422	734,308	11.4	10.1
FY13	7,935	6,854	713,135	11.1	9.6



# Number of Spouse Abuse Victims



FY13 FAP Data

# Domestic Abuse Fatalities Reported to FAP



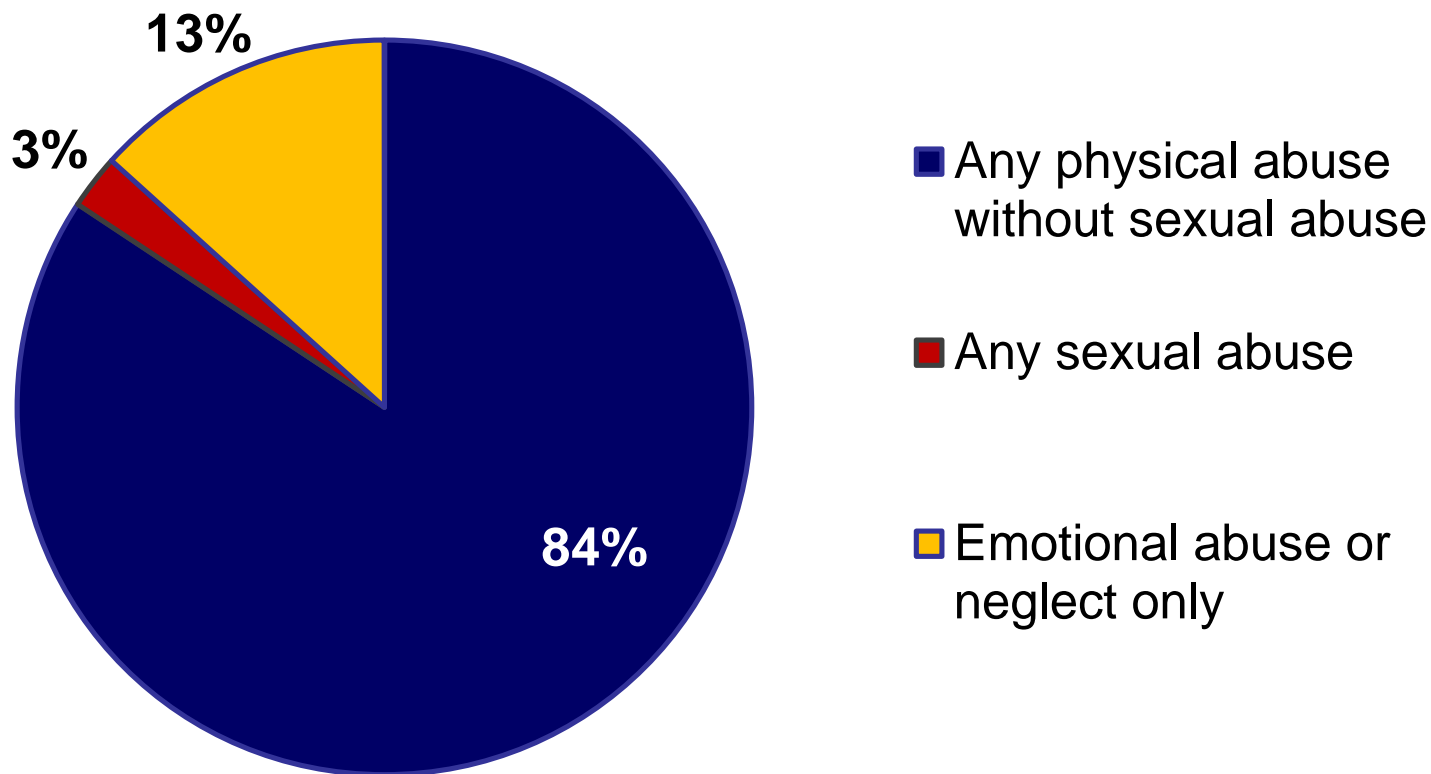
- 16 Fatalities
  - 2 Victims previously reported to FAP
  - 1 Alleged abusers previously reported to FAP
- Sex & status of alleged abusers
  - Male 94%
  - Active Duty 87%

(Fatality reviews to be conducted in FY 15)

FY13 FAP Data



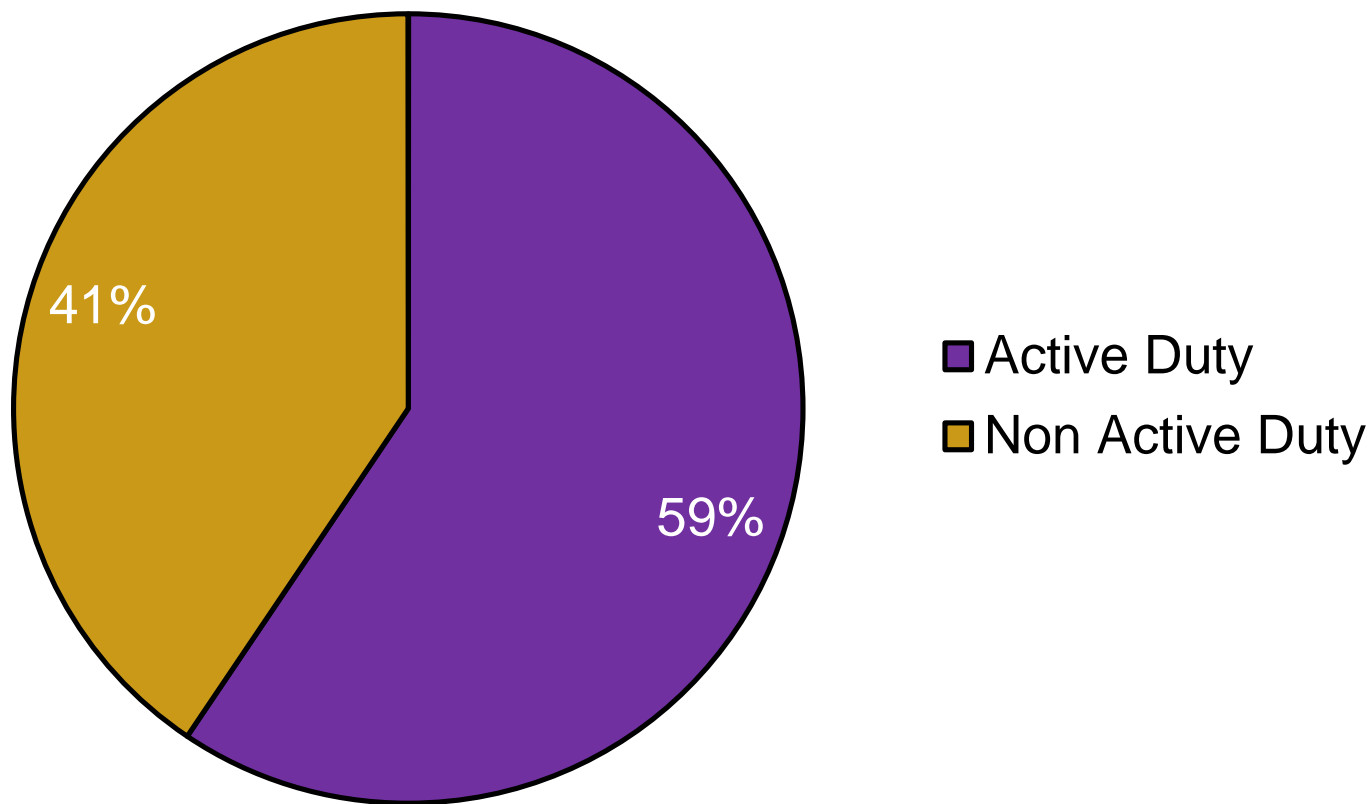
# Type of Spouse Abuse in Met Criteria Incidents



FY13 FAP Data



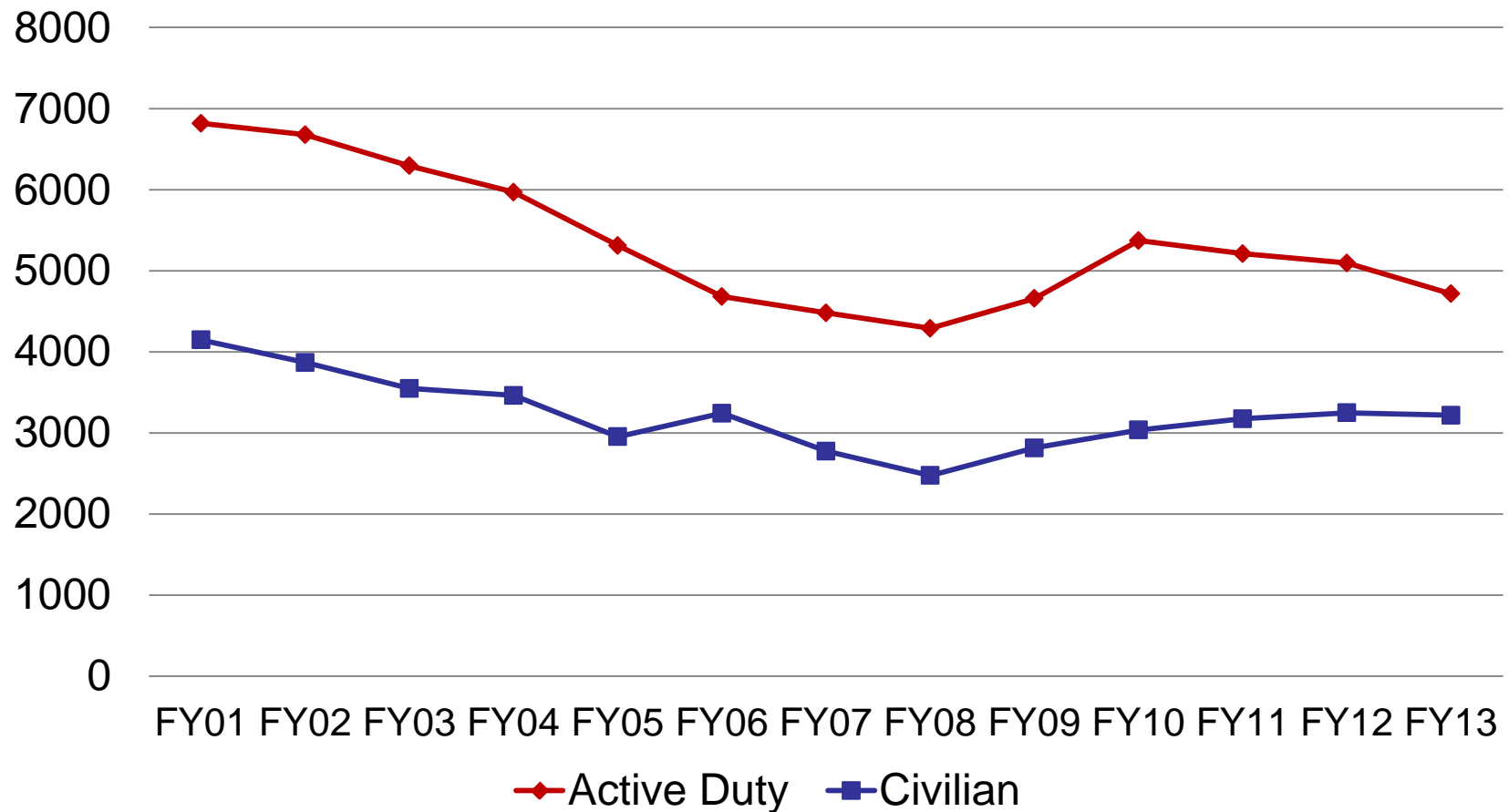
# Status of Alleged Spouse Abuser in Met Criteria Incidents



FY13 FAP Data



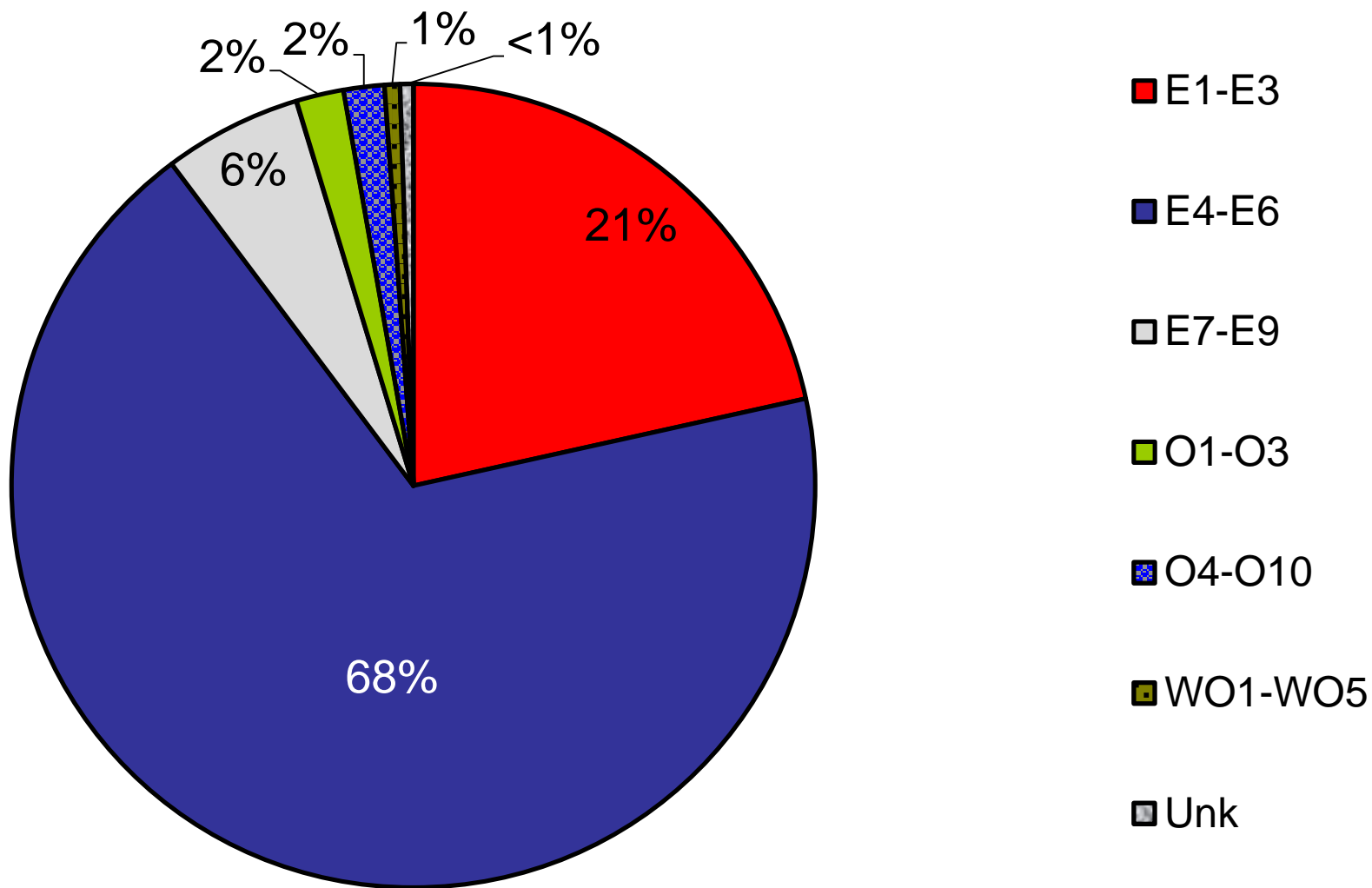
# Status of Alleged Spouse Abuser in Met Criteria Incidents



FY13 FAP Data



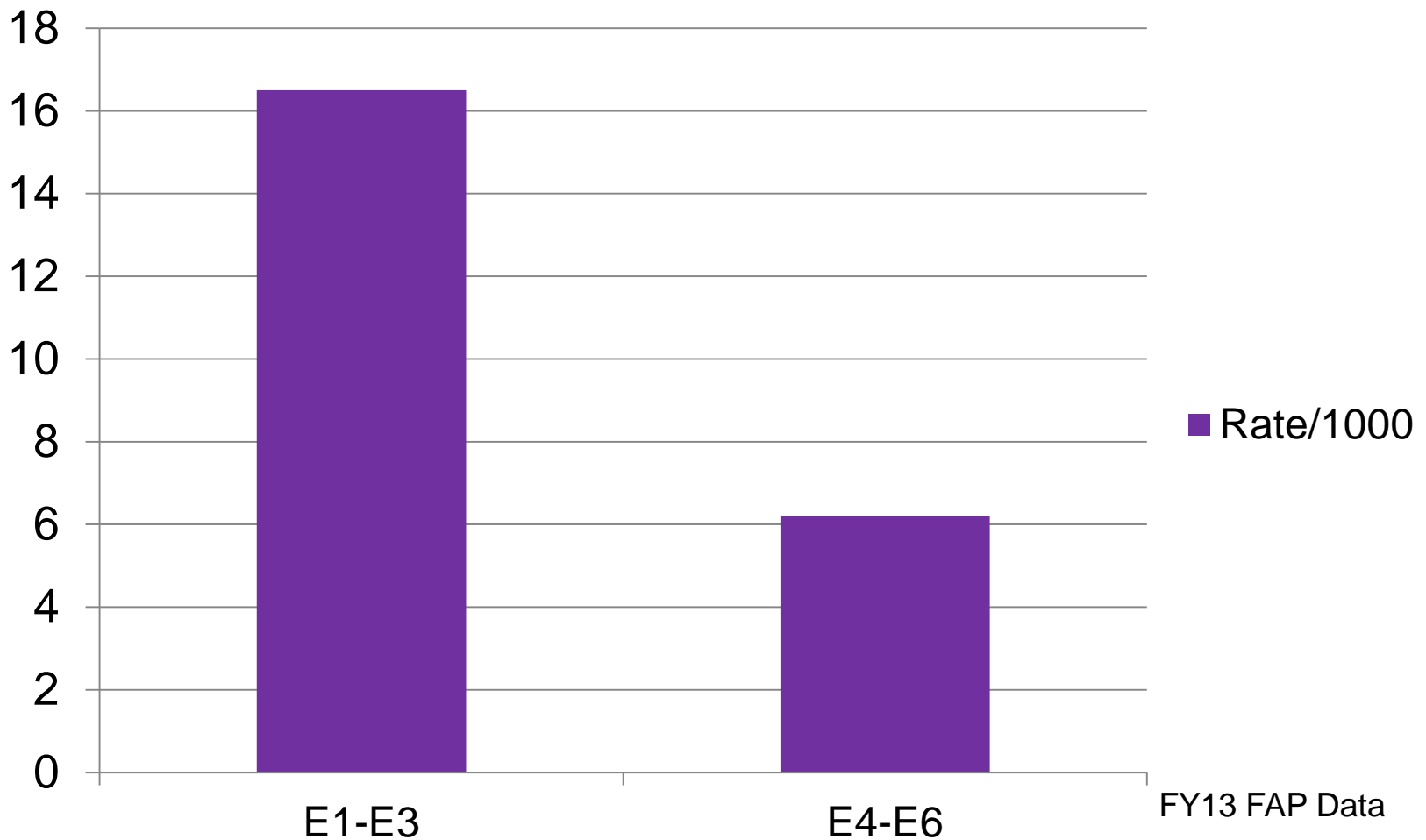
# Met Criteria Spouse Abuse Incidents by Alleged Offender Pay Grade



FY13 FAP Data



# Rate/1000 of Alleged CAN Abusers in Pay Grades with Highest Numbers

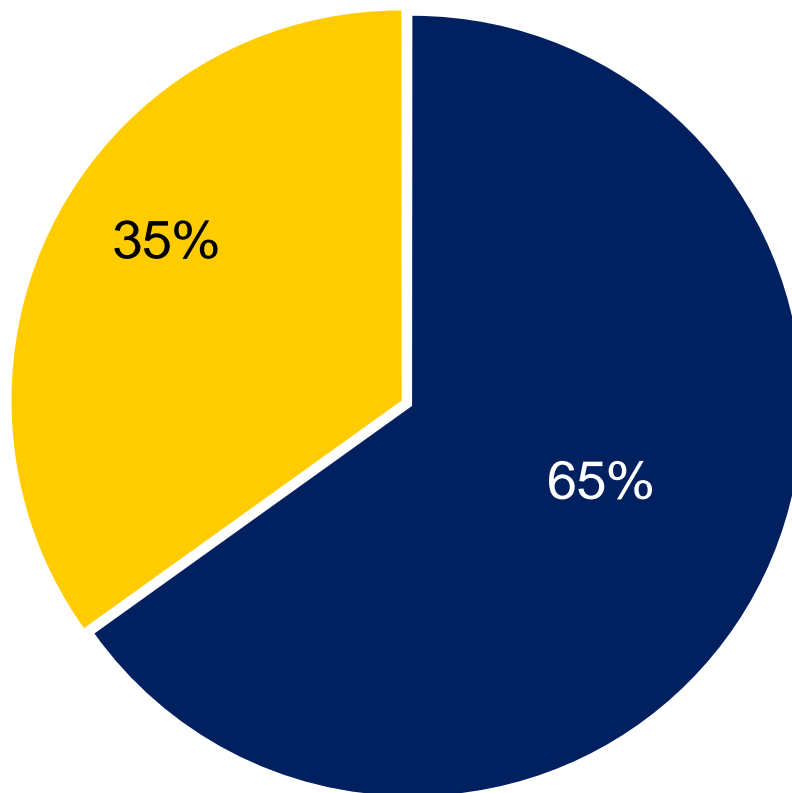






# Sex of Alleged Spouse Abuse Offender in Met Criteria Incidents

■ Male ■ Female



FY13 FAP Data

## **Family Advocacy Program Fiscal Year 2013 Spouse and Child Abuse Data Key Findings**

### **Spouse Abuse**

- The number of reports of suspected spouse abuse to the Family Advocacy Program (FAP) decreased 7.4 percent from FY12 and decreased 6 percent from FY01.
- The rate of reported spouse abuse per 1,000 couples decreased 4.3 percent from FY12 and decreased 12.3 percent from FY01 rates.
- The decrease in number and rate of reports may be indicative of the effectiveness of military public awareness campaigns, family support programs, early intervention programs, the willingness of victims to report abuse, the ongoing impact of military operations on military personnel and family members, or some combination of these and other factors.
- The number of spouse abuse reports that met the DoD criteria for abuse and entry into the FAP Central Registry fell 4.9 percent from FY12 and have declined 28 percent since FY01. The rate of incidents that met criteria per 1,000 couples decreased 2.6 from FY12 rates and is 33 percent below FY01 rates.
- Sixteen domestic abuse fatalities were reported to the FAP in FY13 of which two victims and one alleged abuser were previously known to the FAP. In the domestic abuse fatality reports, 94 percent of the alleged abusers were male and 88 percent were active duty.
- In FY13, alleged abusers who were on active duty in incidents that met criteria for abuse represented 61 percent of all alleged abusers.
- Of the active duty alleged abusers in incidents that met criteria, 68 percent are in pay grades E4 - E6. These pay grades have the second highest rate per 1,000 at 6.2. The pay grades E1-E3 have the highest rate per 1,000 at 16.5.
- In FY13, 47 percent of victims in incidents that met criteria were not on active duty. Of all adult spouse abuse victims in incidents that met criteria, 41 percent were between the ages of 18 and 24, and 47 percent were between the ages of 25 and 35.

### **Child Abuse**

- The number of reports of suspected child abuse/neglect to the FAP increased 2 percent from FY12 and decreased 3.5 percent from FY01. The rate of reported child abuse/neglect per 1,000 children increased 2.2 percent over FY12 rates, but is .7 percent below FY01 rates.
- The number of incidents of child abuse/neglect that met criteria decreased by .2 percent from FY12, and decreased 8.2 percent from FY01. The rate of incidents that met criteria per 1,000 children increased 5 percent over FY12 rates, but is down by 5.9 percent from FY01 rates.

- Of those incidents of child abuse and neglect that met criteria in FY13, 58 percent involved child neglect without child emotional, physical or sexual abuse.
- There were 31 child abuse-related fatalities reported to FAP in FY13, of which eight victims and eight abusers were previously known to FAP. In the child fatality reports, 57 percent of the alleged abusers were male and 60 percent were active duty.
- Of the active duty alleged abusers in incidents that met criteria, 74 percent are in the E4 - E6 pay grades. These pay grades have the second highest rate per 1,000 at 8.9. The pay grades E1 - E3 have the highest rate per 1,000 at 19.
- In FY13, 57 percent of the alleged abusers in incidents that met criteria were male. 93 percent of the alleged abusers were parents. The ratio of male to female alleged abusers and the percentage of parent alleged abusers in incidents that met criteria have remained relatively constant since FY01.